

# SUMMER WEEKLY ACTIVITIES

INARI VILLAGE  
2025



**Visit Inari**  
Safaris & Accommodation



**WILDERNESS  
HOTELS**

# ARCTIC WATERS



## LAKE INARI CRUISE WITH ELECTRIC-HYBRID CATAMARAN

DAILY

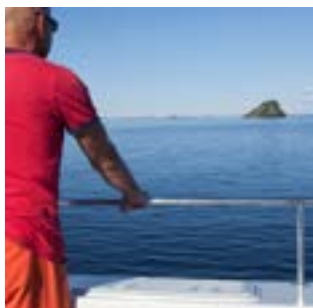
**Departure: 13:00** / 9.6. - 14.9.

**Departure: 17:00** / 1.7. - 3.8.



This cruise starts from the harbour by the Sámi Museum SIIDA, and will take you to see the historical Ukko Island. Lake Inari is the third largest lake in Finland and is home to over 3300 islands. The sacred Ukko Island (or Ukko's Rock) was used as a Sámi sacrificial offering site right up until the 19th century. We will have a chance to admire the sceneries from close range of the island. The catamaran has 120 seats. On board you can buy coffee, tea, wine, beer and small snacks.

1pm cruise stops at Pielpavuono on request, if weather permits. Please state your wish before the departure. There is a marked trail to Pielpajärvi Wilderness Church from Pielpavuono. The journey back to the village is accessible by foot.



**Duration:** 2,5-3 h

**Price:**

**13:00:** 29€ / person, 20€ / child 4-11 years

**17:00:** 27€ / person, 18€ / child 4-11 years

## MIDNIGHT SUN CRUISE

BY REQUEST

**Departure: 22:30 (2h)** / 2.6. - 18.7.



Bright and shiny, the sun seems to be oblivious of time as you cruise on Lake Inari in daylight around the midnight.

You are north of the Arctic Circle and experiencing the Midnight Sun!

The Midnight Sun is a natural phenomenon that occurs north of 66° N 33', between the vernal equinox and autumnal equinox.

During the midnight sun period, the sun does not go under the horizon at all.

The wilderness lake, Lake Inari, guarantees a perfect setting for experiencing the nightless night.

**Price:** 119€ / person, minimum charge 3 persons

**Price includes:** cruise with our fishing boat



# ARCTIC WATERS



## PIKE FISHING EXPEDITION

MON / WED / FRI

**Departure: 10:00 (2,5h) / 2.6. - 31.7.**



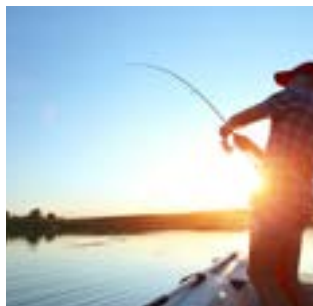
Lake Inari is well known as a fishing destination. This great wilderness lake has several good fishing spots as well breath-taking scenery.

Throughout history, pike fish has had a big role in everyday life on the shorelines of Lake Inari. During the old days, part of the taxes to Swedish crown were paid in dried pike, a delicacy of the royals. Our fishing guide will take you to the archipelago where there is a good chance to catch arctic lake pike. During the expedition our guide will serve you light snack, coffee or tea.

**Price:** 167€ / person

**Price includes:** fishing equipment, coffee/tea, small snack

**Additional info:** Extra hour 100€/hour (shared between participants)



## FISHING TRIP TO THE FOREST POND

TUE / THU / SAT

**Departure: 10:00 (2-2,5h) / 3.6. - 27.9.**



We head by car to the shores of a small forest pond to try our luck at fishing. Fishing is done from the shore with a rod and worm as a bait. Juice and biscuits are served during the trip. Let's hope that Ahti, the Finnish god of water, blesses us with good catch.

**Price:** 81€ / person

**Price includes:** fishing equipment, juice and cookie



## RAFTING ON THE SPLASHES OF RIVER JUUTUA

BY REQUEST

**Departure: 11:00 (2,5-3h) / 12.6. - 18.9.**

This stunning experience on the River Juutua, which flows into Lake Inari, is an exciting and fun way to enjoy the scenery of Inari region. During the river raft you will experience two bigger white-water rapids and smaller streams. Starting point is Lake Sulojärvi and ending point is Haapakoski.

**Price:** 130€ / person

**Price includes:** river rafting equipment (life vest, helmet), coffee/tea & pastry

**Additional info:** min. 4 persons. Own waterproof outdoor clothing is needed as you may get wet during the river rafting. Minimum age 14 years. \*Available on Thursdays (also on Tuesdays 1.7.-19.8.)





# ARCTIC WATERS



## LEMMENJOKI RIVER TRIP

MON / WED / FRI

**Departure: 9:45 (6-7h)** / 9.6 - 20.6. & 15.7 - 19.9.

Come to Lemmenjoki National Park and spend a day as a guest of the Paltto family. Once you have arrived at the family home, you will be taken on a riverboat journey, traveling a total of 17km along the beautiful river Lemmenjoki, which reaches deep into the Finland's largest national park.

The cruise will take you to the magnificent Ravadas falls. Shortly after, your host will pull the boat ashore and offer you lunch around the open fire, treating you to traditional Sámi yoik singing and tales of reindeer herding. Once back at the Paltto's home, you will get the opportunity to meet the rest of this Sámi family, the reindeer!

### Price:

215€ / person (with transfers from Inari)

90€ / person (without transfers)

**Price includes:** river cruise, lunch by the fire, Sami joik, ateljee Visit



# CULTURE



## REINDEER & SÁMI HANDICRAFT

TUE / FRI

**Departure: 14:00 (3h)** / 2.7.-20.9. & 1.-29.11.

Come and be a guest in the home of an Inari local, where you will get a real sense of Lapland way of life. Tuula's family lives in a remote location by the beautiful Muddus Lake with her reindeer. She will first introduce you to her reindeer before inviting you in her house where she tells you about Sámi handicraft, for example how traditional reindeer boots are made.

**Price:** 125€/ person

**Price includes:** 2h program at the farm



## INARI CULTURAL DAY

MON / WED / FRI

**Departure: 10:00 (6h)** / 20.6.-15.9.

This activity is a combination of our all-time favorites in Inari. During the day you will have a guided tour in the Sámi museum and nature center Siida, enjoy an outdoor lunch by the river Juutua, and join a cruise on Lake Inari. You will learn about the ancient and vibrant Sámi culture and arctic nature, and see the historical Ukko Island. In Siida you will also have a chance to shop local handicrafts.

**Price:** 160€/ person

**Price includes:** Siida entrance, Lake Inari Cruise and lunch



# OUTDOOR ACTIVITIES



## INARI HIKING DAY

TUE / THU / SAT

**Departure: 10:00 (3h) / 1.5-15.11.**

Hear the wind and the birds and enjoy the beauty of wilderness landscapes. If you are willing to have a direct touch with the nature of this area, this activity is meant for you. You will enjoy picnic in the middle of beautiful sceneries hearing stories told by our experienced wilderness guide. If we are lucky during the trip we might see also some wild animals like reindeer and willow grouse.

**Price:** 90€/ person

**Price includes:** Picnic lunch



## MIDNIGHT SUN HIKE

MON / WED / FRI

**Departure: 21:00 (3h) / 22.5-22.7.**

The gentle light of the midnight sun shows the nature in a new perspective. During this night time hike you will have a relaxing walk on one of the many fells in Inari. You will learn about the unique nature and wildlife of the area and enjoy the beautiful scenery.

**Price:** 90€/ person

**Price includes:** Sparkling drinks



## FORAGING LAPPISH WILD FOOD

TUE / THU / SAT

**Departure: 11:00 (2,5h) / 20.5-30.9.**

This trip will take you to forest and swamps to look for the best places of "earth gold" - like blueberries, cloudberries or mushrooms depending on the months. If we are lucky, we will find a good spot with many super food to pick into our baskets. Summer is the time of harvesting and berries and mushrooms are big part of it. During the trip we wil have a snack. Spend a day like a local.

**Price:** 75€/ person

**Price includes:** Snack



## INARI SUMMER BIKE TOUR WITH E-FAT BIKES

TUE / THU / SAT

**Departure: 14:00 (3h) / 1.5-31.10.**

This guided e-fatbike tour takes you to the best trails in Inari. With electric fatbikes it is possible to explore beautiful landscapes that would be difficult or time-consuming to reach otherwise. Halfway through the tour you will stop to make a fire and enjoy warm drinks and a snack.

**Price:** 130€/ person

**Price includes:** Snack & coffee

**Note:** Minimum age 12 years

# HUSKY ACTIVITIES

We are proud to present you our husky farm, which is one of the first farms that was granted with Green Activities certification.



## HUSKY FARM VISIT

MON/ WED/FRI

**Departure: 10:00 (1,5h) / 3.6.-30.11.**



At the husky farm you will meet arctic sled dogs. Every dog has a special story, which the musher will be happy to share with you. After the visit, we will take you back to your accommodation in Inari.

**Price:** 48€ / person

**Price includes:** husky farm visit, beverage

**Additional info:** Not suitable for children under 3-years



## HIKE WITH THE HUSKIES

MON / WED/FRI

**Departure: 12:00 (2,5h) / 3.6. - 31.10.**



At the husky farm you will meet arctic sled dogs. Our musher will lead you and the huskies to the Lappish arctic nature. Be ready for the adventure, as huskies love to be on the nature and to sniff around other animals' tracks – what we can't even see. After the walking tour, we will take you back to your accommodation in Inari.

**Price:** 108€ / person

**Price includes:** hike with huskies, snack, beverage

**Additional info:** Not suitable for children under 5-years



## HUSKY EXPERIENCE ON WHEELS

TUE / THU / SAT

**Departure: 10:00 (2-2,5h) / 3.6.- 31.10.**



After a short transfer to the local husky farm, you'll meet and greet the lovely huskies. Husky musher will tell you about huskies and show you the farm.

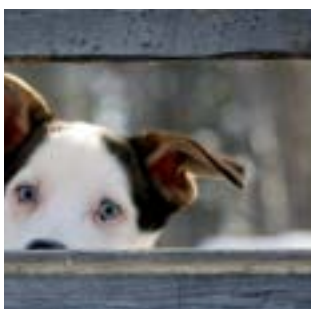
During the visit you will also have an exciting trip with huskies on wheels. Musher will be driving the wagon pulled by the husky team and two persons can sit on the same wagon.

After ride, sit and relax by the fire to enjoy a drink while your pulse will calm down.

This activity can be arranged only when it is below +10 Celsius degrees.

**Price:** 129€ / person

**Price includes:** 30-45 min husky ride, farm visit, safety gear, beverage



# BOOKINGS

## Availability:

- 1.6.2025 - 31.8.2025 weather permitting
- Min. 2 adults if not otherwise mentioned
- Exceptions:
  - Lake Inari Cruise 9.6.-14.9. 13:00, 1.7.-3.8. 13:00 & 17:00
  - Midnight activities until 22.7.2025

## Activities includes:

- Pick-up and drop-off transfers from accommodations within Inari village (excl. Lake Inari Cruise)
- Guiding in English
- Insurance, VAT and transfers during activity

## Bookings:

- Prices are informed per person
- Children 4-14 years old: -30%, unless otherwise mentioned
- Bookings latest two days in advance, after that according to availability
- Booking terms:  
[visitinari.fi/booking-terms-conditions/](http://visitinari.fi/booking-terms-conditions/)  
[wildernesshotels.fi/booking-and-cancellation-terms](http://wildernesshotels.fi/booking-and-cancellation-terms)

## IN CO-OPERATION



### HOTEL RECEPTIONS

+358 (0)50 447 7887 (WILDERNESS HOTELS)

[SALES@WILDERNESSHOTELS.FI](mailto:SALES@WILDERNESSHOTELS.FI)

+358 (0)40 179 6069 (VISIT INARI)

[SALES@VISITINARI.FI](mailto:SALES@VISITINARI.FI)

